

# Marine Biology



Coming up

## Section meetings

**Marine Biology**

**Section meeting**

**Date: 7th November**

**Time: 7.30pm**

**Location: Société Jersiaise, 7 Pier Road**

**Marine Biology**

**Section meeting**

**Date: 5th December**

**Time: 7.30pm**

**Location: Société Jersiaise, 7 Pier Road**

<https://www.societe.je/our-sections/marine-biology/>

Facebook: Societe Jersiaise marine Biology Section

# Marine Biology



Coming up

**3rd November 2024**

**Meet at Green island at 12.30**

**Low tide 2.0m at 13.41**

**31st December 2024**

**Meet at La Rocque at 12.00**

**Low tide 2.1m at 13.08**

**Come join us for a discovery session to see what can be found.**

**Please wear closed toes shoes and dress appropriately for the weather.**

<https://www.societe.je/our-sections/marine-biology/>

**Facebook: Societe Jersiaise marine Biology Section**

# Portelet Annual Crab Survey

Each year a survey is carried out at Portelet to measure the abundance, distribution and habitat use of crab species in the intertidal zone. This study was originally carried out to establish annual trends in juvenile *Cancer pagurus* abundance and distribution over time.



This year we managed to survey the sublittoral, eulittoral and littoral areas of the shore. We will share the results at a later date once we have had chance to look at the data. Please do come and get involved in these projects – the more people we have the easier it is, and we can achieve more. No prior experience is needed – just a can do attitude!



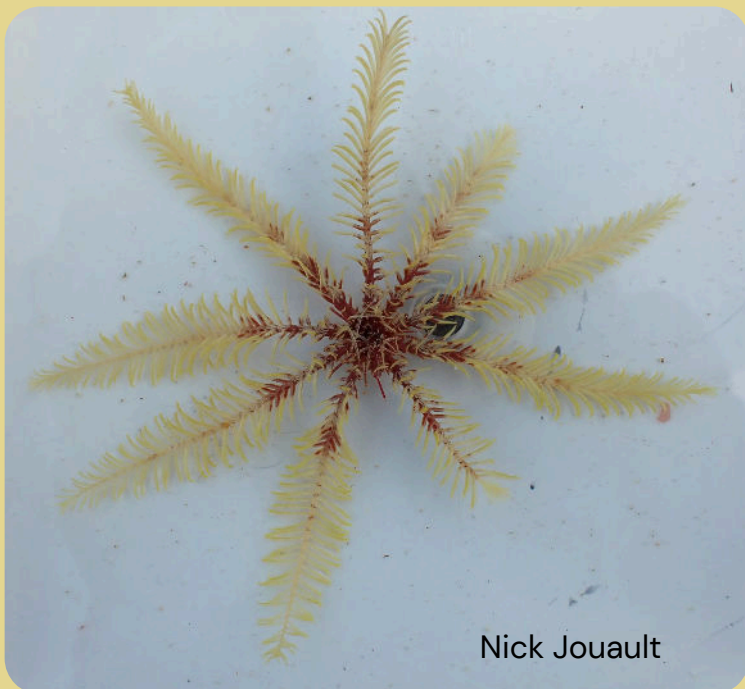
# What have our members been up to?



Nick Jouault

The wreck of the SS Emily Eveson hosting a number of species.

Nick Jouault represented The Marine Biology section at the Porcupine MNHS field trip, on Alderney, last month. A number of interesting finds were recorded during the trip, including a Rosy feather star at Clonque and a Mauve stinger. Bravo to Nick for getting close enough to take this beautiful photograph. I am sure many of you will be aware we had a quite an impressive bloom of mauve stingers here in Jersey also.



Nick Jouault

*Antedon bifida*  
Rosy Feather Star



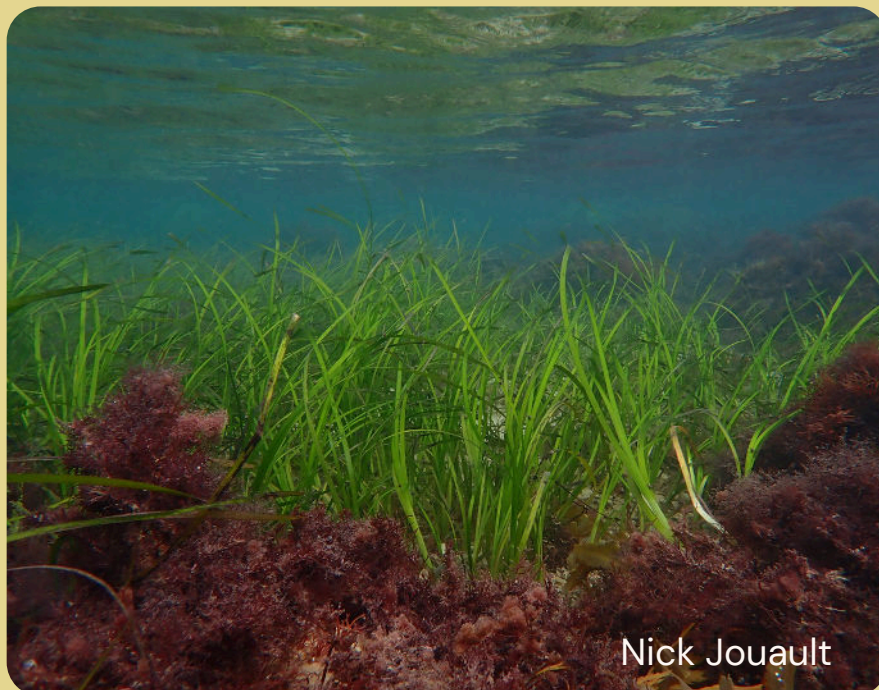
Nick Jouault

*Pelagia noctiluca*  
Mauve stinger

# What have our members been up to?



The former tagging programme continues with previously tagged individuals being re-measured.



The eel grass bed monitoring programme continues and the beds at the Ecrehous look very healthy.

# Interesting finds: October



Members have been making the most of some fabulous low tides and coming across some great species.



*Flustra foliacea*  
Hornwrack



*Euspira catena*  
Large Necklace Shell



*Galathea* sp  
Squat lobster



# Interesting finds: October



Lou Wagstaffe

*Patella pellucida*  
Blue-rayed Limpets



Lou Wagstaffe

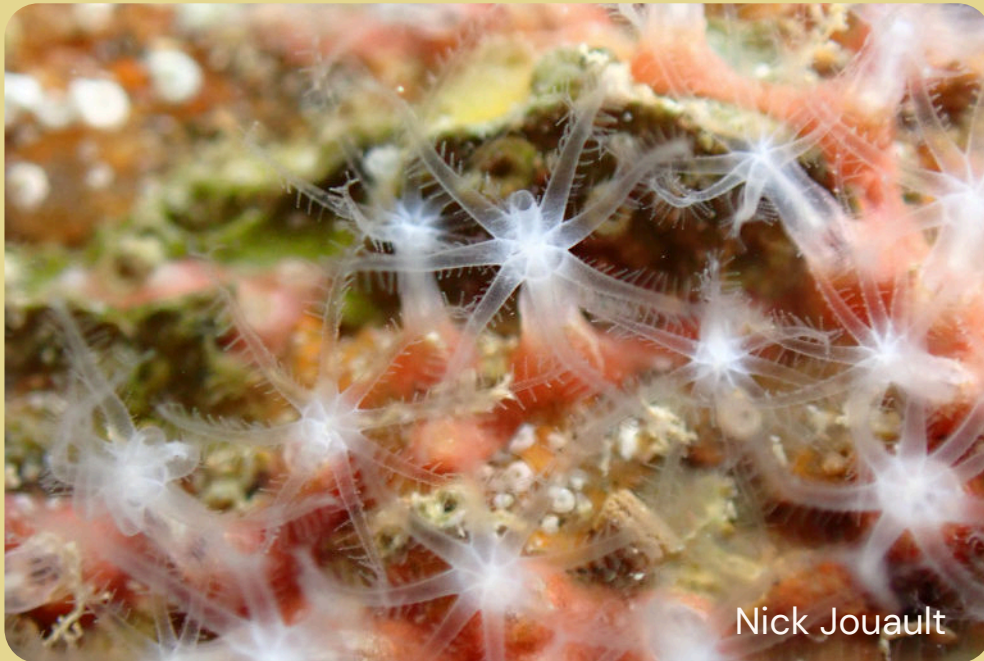
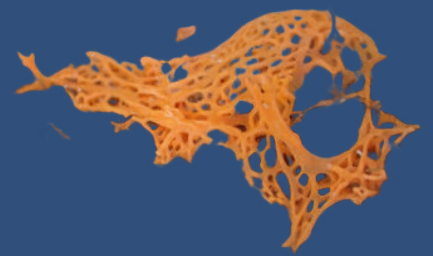
*Aeolidiella alderi*  
Collared Sea Slug



Lou Wagstaffe

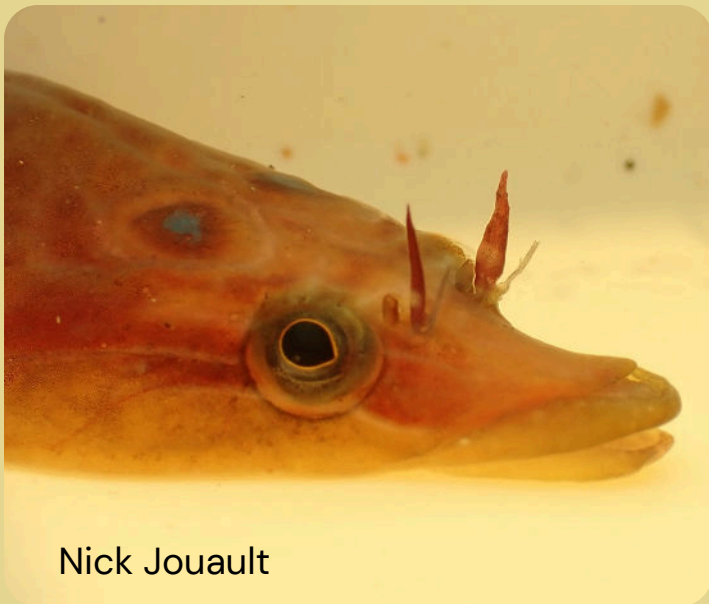
*Berghia coerulescens*  
Anemone Sea Slug

# Interesting finds: October



Nick Jouault

*Sacrodictyon sp*



Nick Jouault

Clingfish



Nick Jouault

*Spinachia spinachia*  
Stickleback